

Inside this issue:

New Yacht Club Site	2
Yacht Club Classifieds	2
Skipper in the Spotlight, YMCA Sailing Classes	3
Club site Photos	4
What is Hilo Sailing Org?	5
Fifth Anniversary	5
Membership	6

Club Officers

- ◆ *Commodore: Jon Olson*
- ◆ *Vice Commodore (East): Ron Reilly*
- ◆ *Vice Commodore (West): Alicia Star-song*
- ◆ *Rear Commodore Power: Vacant*
- ◆ *Rear Commodore Sail: Vacant*
- ◆ *Secretary: Tomas Chylek*
- ◆ *Treasurer: Barbara Magnuson*

9th of March is Club Potluck

Yacht Club members - This month's potluck will be on Wednesday March 9th at Wailoa State Park Pavilion number 3 beginning at 6:30PM. The Club potlucks have been a great source for boating information and a time to share good stories and get brought up to date on what is happening with our club site. Many informal club discussions happen at the potluck.

The potluck is a good time to sign up for sailing the following Sunday.

Our club sail days will be the Sunday immediately following our Potluck Wednesdays.

You are encouraged to bring boating items that you have for sale and to let folks know what you are looking for in the way of boating gear.

A potluck discussion item that remains lively is one about Reeds Bay moorings and how "the best" mooring is constructed. Some people say that the best mooring uses chain and lots of concrete

weight. Some people feel that lots of steel weights and polypropylene line is the best. Others believe that a combination of the two work best. Many good discussions have ensued and the best outcome is that all agree moorings in Reeds Bay need to be visually inspected very often. At least every six months.

Lt Harvey Egna from the Coast Guard Auxiliary has been invited to give a presentation at this Wednesday's Potluck.

Yacht Club Board

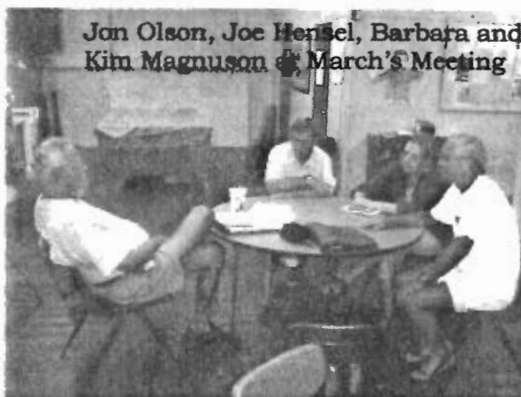
Commodore Jon Olson is heading up our new board and he is seeking input from club members in the way of activities. If you have suggestions for Jon then please call him at 443-1036.

A few of the activities the club is currently pursuing is the club site, supporting bills in the state house and

senate to do with a new boat ramp on the ocean side of the Wailoa River

Bridge and youth sailing then please call Jon and programs in conjunction he will give you the scoop on what you can do.

If you feel you can be involved with these efforts *Board meets 1st Wed each month 6:30 Ola'a Center*



Jon Olson, Joe Hensel, Barbara and Kim Magnuson at March's Meeting

New Yacht Club Site—Kuhio Kalaniana'ole Park

To the right is a photo of an overlook from our future club site. At this time the site is being worked on by the Rotary. Once the Rotary has completed their planned improvements then we can start our portion. We plan to share an area 50 feet wide by 150 feet long with UHH and YMCA for storage of small sailboats and related gear. We plan also to have a small launch area where very shallow draft sailboats up to 19 feet can be launched. (more photos page 4)



Classifieds

John and Mikki Messina are readying to move to the Oriental area of North Carolina. Please give John a call at 965-7500 for information on sails for a Mariner 31 ketch.

John Luchau is looking for a new home for his antique outboard motor. It is a 5hp Saber Supreme made by the Gale corporation of Galesburg, Illinois in 1955. \$125. Call him at 982-5959.

John L. is also selling his Scorpion sailboat. The Scorpion is almost exactly the same as a Sunfish. This boat was raced as #14 in our State Sunfish Regatta in October. \$500 - 982-5959.



Not for sale - Just me out in "Orinoco"

John L. is selling charts of the coast of India. Most are of the mid 1980s editions and are in very good unused condition. \$3 each. 982-5959.

John L. wants a diesel cabin heater for his sailboat. 982-5959.

Needed - Conscientious membership chairperson who is able to keep up the membership list and to actively solicit new members.

Needed - Rear Commodore for sail who is familiar with organizing races.

Needed - Rear Commodore for power who is familiar with powerboats and organizing powerboat activities.

Skipper in the Spotlight

March 2005's Skipper in the spotlight is Kim Magnuson. Interviewing Kim was fun for me because I found that he and I graduated from different high schools together, we lived in the same states at different times but we were in Vietnam at the very same times. We probably even waved at each other. Me on "the River" and him on a Cargo ship. Coincidence???

Kim graduated from the California Maritime Academy in 1969 and caught his first ship "American Miller" a C2 WWII Cargo ship to Vietnam that year. Kim was on many ships in his merchant career from 1969 to 1995 when he retired. He hauled rice, wine, chemicals, containers and retired as a Matson Captain. Kim was even a Skipper of a tour boat on Lake Tahoe in 1971.

Kim and Barbara were married in 1970, lived in Sheep Ranch, Calaveras County, California until 1974 and they raised 3 children in Willamina, Sheridan and Beaver in Oregon.

Kim and Barbara moved to Hawaii in 1998 to their home in Paradise Park and have just completed their new home in Onomea. Since '98 they have owned the Bristol 22, and "Cheers" a 26 foot International Folkboat which he skippered to win the monohull division of the club's only off shore round the FAD buoy race.

Kim raises carnivorous plants, loves to sail and fish and helps each event hauling and setting up Walker Bay and Sunfish sailboats. Kim is a certified sailing instructor who has helped train many of our young sailors and he occasionally



skipper the local pilot boat. Kim is credited with organizing our Yacht Club and was our very first Commodore in the years 2001 and 2002. He now is serving as a YC Board Member. Thanks Kim for all your hard work.

YMCA Plans For Sailing Classes

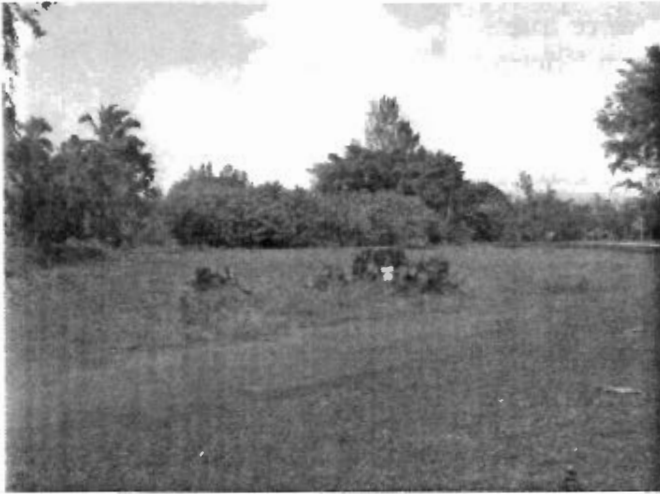
The Waiakea Settlement YMCA with club board director Claudia Wilcox-Boucher in charge will be planning future sailing classes. The YMCA now has nine fully functional Sunfish Sailboats to use for instruction and can also offer

classes in windsurfing. The Y's policy has been that the class sizes be limited to two students per training vessel.

Help Claudia plan for future sailing classes. Please call her at 935-3721.



Future Club Site Photos



Entering the site from Kalaniana'ole. Our area is between the stumps and the trees center of photo.



This is the proposed path to our launching area. It is now soil and is proposed to be gravel.



This is the old boat ramp which we will be cleaning up as soon as we are allowed use of the property.



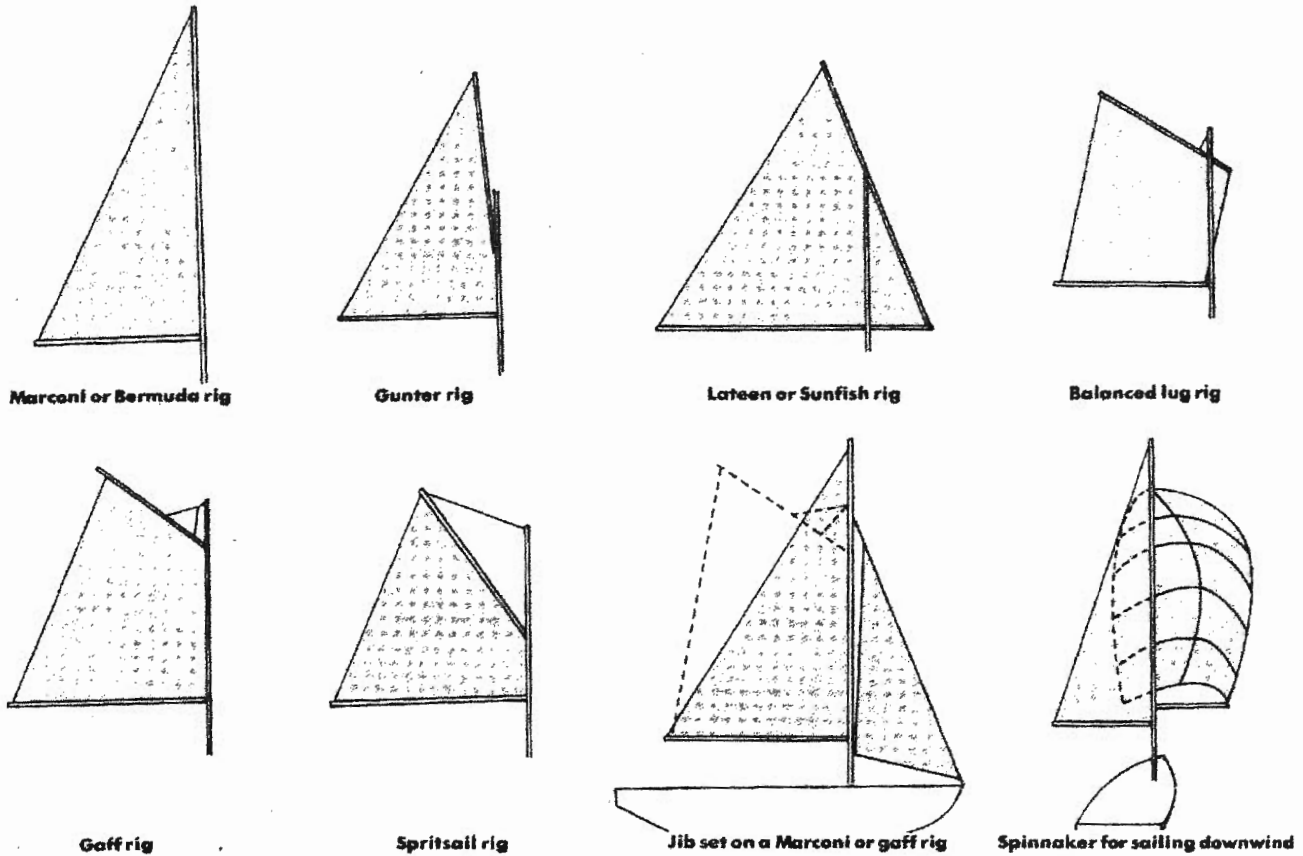
The photo above and the one on the bottom left are views from the property's waterfront in Reeds Bay. As you can see it is an excellent area in which to sit, relax, picnic and keep watch over our boats. A truly beautiful area.

There is much more work to be done and four Rotary Clubs in the Hilo area have done the majority of the work to date.

If and when they let us know of a work day we will publish the information via e-mail so that you too can participate.



SAIL MAKING AND REPAIR

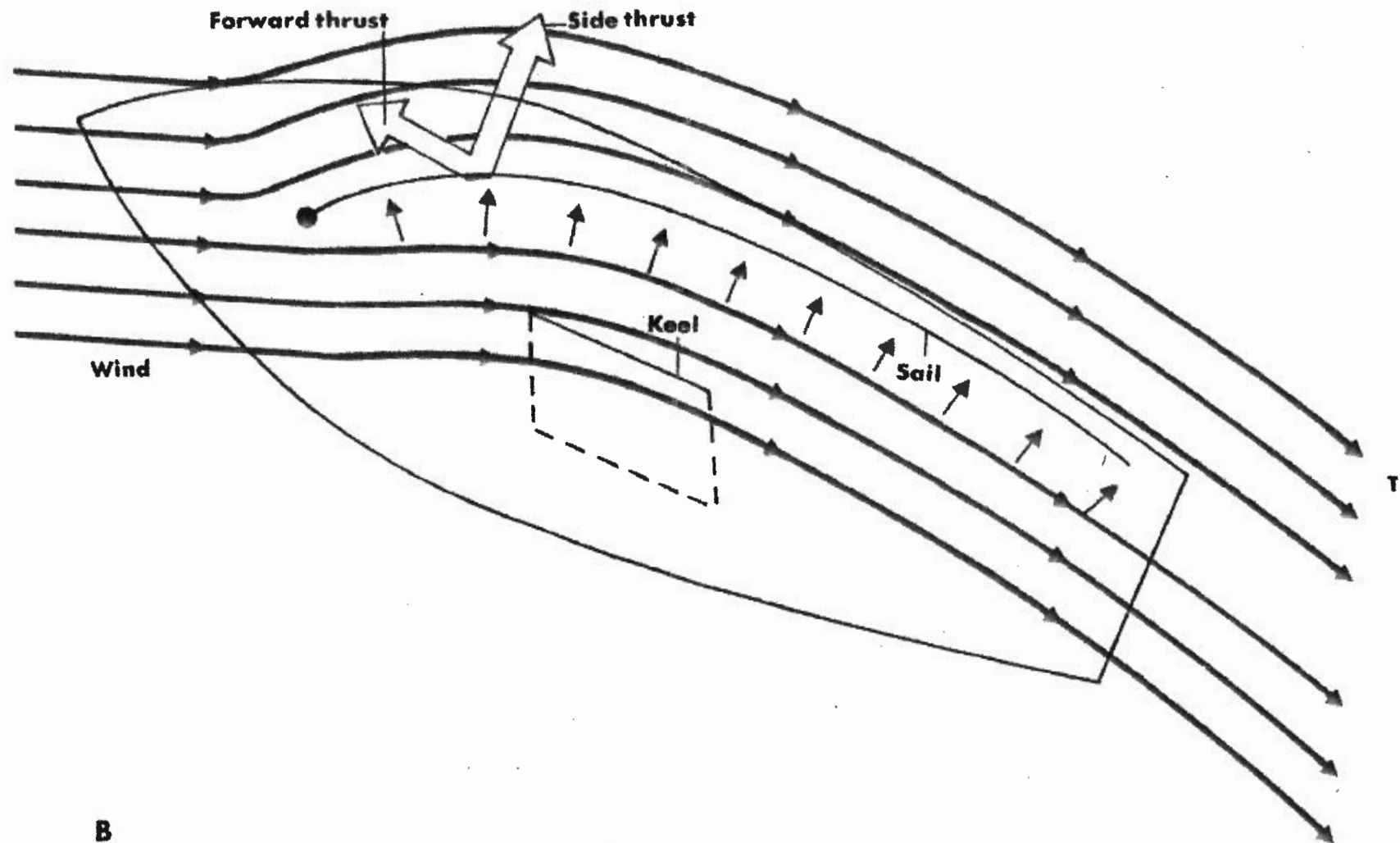


A Figure A: Sailing rigs for dinghies come in a great variety of shapes, as these examples suggest.

Today's smaller sailboats have, of course, far fewer masts than the large schooners of the late 1800s. But all of them use fore-and-aft sails, from tiny Sunfish to the lofty America's Cup defenders in the 12-meter class. Sizes vary to suit the size of the boat and, as Figure A shows, so do the shapes. Although the triangular Marconi rig (color photo, page 1839) is probably the most popular, four-sided fore-and-aft sails are also widely used.

All of these rigs share the quality inherent in fore-and-aft sails—the ability to let the boat sail close to the direction the wind is coming from. To understand how they can do this, think of the sail as a curved shape—like an airplane wing standing on end. The wind striking the sail's front edge is split so that one part travels around the outside of the curve and the other part travels across the inside of the curve (Figure B). The air traveling the longer distance, around the outside, must travel faster to reach the back edge of the curve at the same time as the air taking a shortcut across the inside. As the speed of the air going around the outside increases, the pressure it exerts on the outside of the sail decreases, becoming weaker than the pressure of the slower-moving air traveling across the inside. The result is a force exerted against the sail from the inside. Acting alone, this force would tend to push the boat sideways. But when the hull is designed to move forward rather than sideways (on some boats a keel or centerboard also helps to resist side slipping), the sideways push is converted into a thrust that moves the boat forward against the wind.

The trick in designing a sail that will move a boat into the wind is to make it in such a way that it can hold a curved shape when mounted on the mast. The sail's outline is not of key importance—it can be either triangular or four-sided. But the cross-sectional shape from the front (leading) edge to the back (trailing) edge must have the deepest part of the curve in the front 40 percent of the sail for it to drive the boat forward efficiently.



B Figure B: A sailboat gets its forward push because air moving around the outside of the sail must travel faster to reach the back of the sail at the same time as the air taking a shortcut across the inside. The faster moving air exerts less pressure on the sail than the slower moving air, creating a thrust (red arrows) that tries to push the boat sideways. But the resistance of the hull shape (and the keel if there is one) converts the side thrust into a forward push.

What is Hilo Sailing Org?

Hilo Sailing Org is a non-profit sailing organization that owns the boats of Na Hoa Holomoku. We currently have 4 Walker Bay 10s, three Sunfish, one Hobie 14, a Hobie 16 and a West Wight Potter 19.



All these boats are available to NHH and Hilo Sailing Org members to check out and use.

Membership in Hilo Sailing Org is available for \$50 a year to current members of Na Hoa Holomoku. That \$50 a year entitles members

to use one Walker Bay or Sunfish (not Y Sunfish) at any time they wish for no charge once their qualifications have been established. (The Walker Bay, Sunfish and Hobies are available on Club Sail and Race Days to

any Na Hoa Holomoku Member who has met qualifications even if they are not members of Hilo Sailing Org.)

Na Hoa Holomoku Yacht Club Fifth Anniversary

In October 2005 our club will be celebrating its fifth anniversary. In October five years ago Kim Magnuson got boat owners in the Reeds Bay area together and had an informal meeting on the beach. From those humble beginnings the club has grown to as many as 120 family members.

Our assets include boats, steel containers, emergency gear and money in the bank. We hope to soon have a club site at which we

can launch small boats to do sail training and to get to the larger boats in Reeds Bay. Our emphasis has changed from watching over boats in Reeds Bay and encouraging boating to youth sail training and lobbying for Hilo Bay improvements.

In preparation for celebration the board would like to put together a committee to organize the event or events. Tentative dates would be the second Wednesday evening in October and the following

Sunday so that our regular potluck and our usual invitation race day can be had in conjunction with the celebration.

If you have any experience in organizing these type of events, please come forward and call Jon Olson 443-1036 to volunteer.

This will be a very fun time for all of us whether a big event or small we always have a great time when with our sailing friends.

Na Hoa Holomoku
P. O. Box 1661
Kea'au, HI 96749

This issue editor: John
Luchau
Phone: (808) 982-5959
Email: SkiprJohn@aol.com



Potluck begins at 6:30M at Wailoa State Park at Pavilion number 3, March 9th, 2005

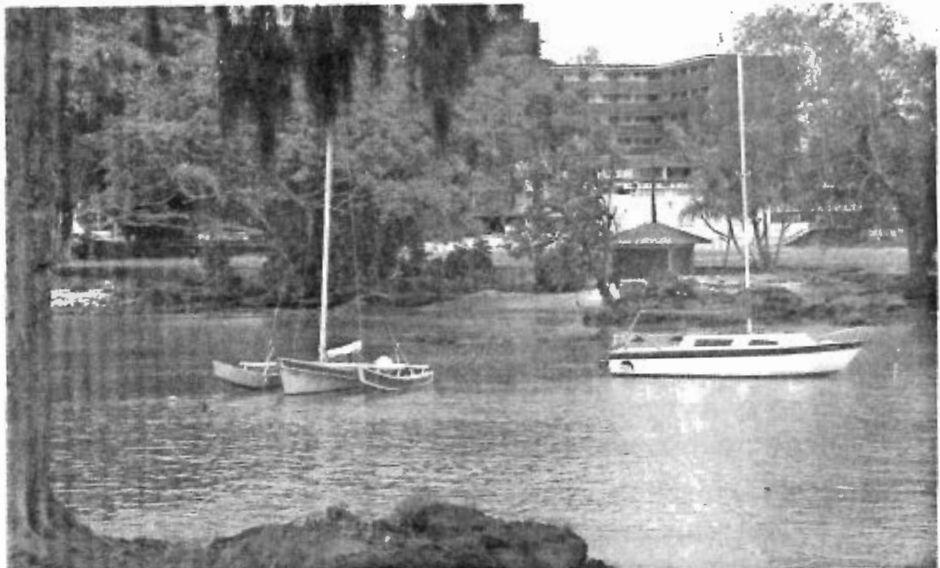
Membership/Donations

Please renew now with a check to Na Hoa Holomoku mailed to P. O. Box 1661, Kea'au, HI 96749. Make certain you notify us of any change of address, phone numbers or e-address. Talk to your friends about us. Our membership depends on "word of mouth." Spread the word!

Membership: Regular family membership \$40. Associate (off island) \$24 and Junior (under 18 or fulltime student) \$20. Membership forms are on the website. Include a check with your application.

Schedule of stuff:

March 9th - Potluck
March 13th - Club Sail Day



Wayne Mort's "Island Girl" and Scott and Lynn's "Naia" on their moorings during a tranquil day in Spring.